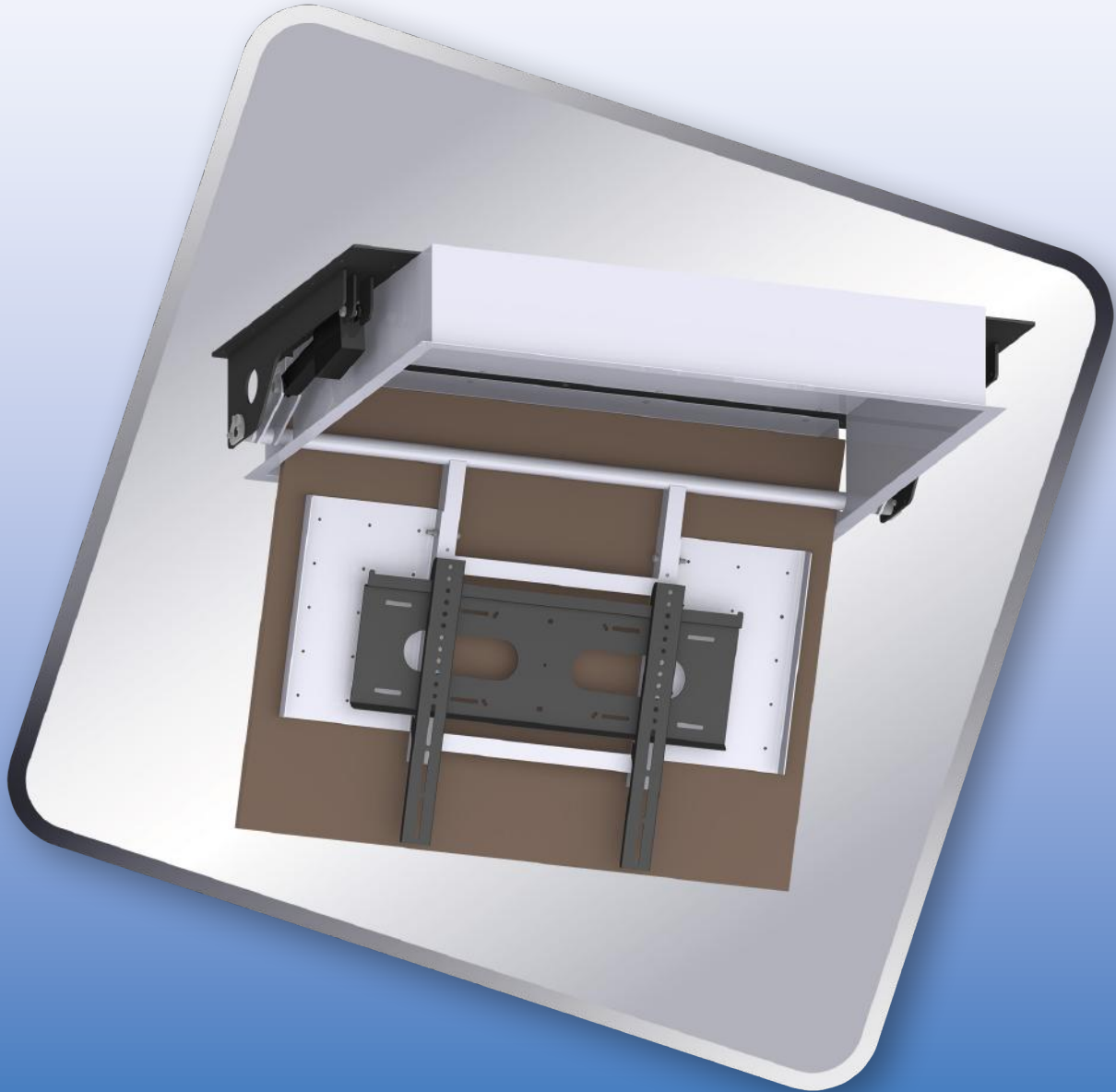


RAVELL®

CEILING TV LIFT WST-2



The RAVELL® CEILING TV LIFT elevates TV/Monitor placed inside suspended ceiling to a viewing position. Moves it back to horizontal, hiding position inside the ceiling. Increases the aesthetics of the room (conference room, training room, home). It makes the TV/Monitor invisible during the standby mode. Additionally protects the unit before unauthorized access.

APPLIANCE:

- Dedicated, in STANDARD version to TV/Monitors – diagonal screen 55"
- Max lifting weight: 36kg (including covering ceiling panel)





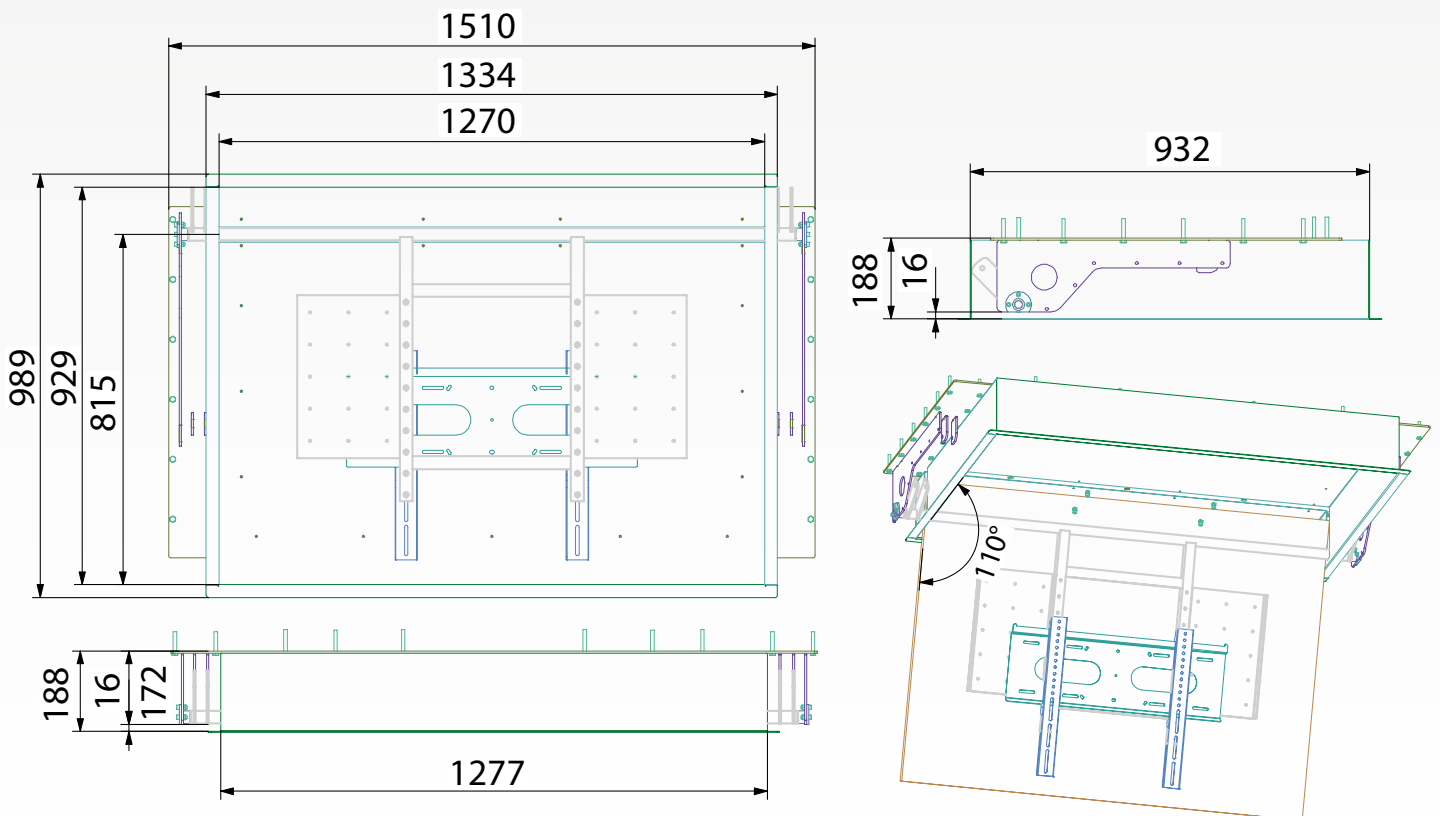
CEILING TV LIFT WST-2

ADDITIONAL ACCESSORIES:

- montage distances to adapt desired measurement,
- remote control (wireless IR, RF or RS232).

MAIN FEATURES:

- lift construction based on a horizontal frame system guided by a precision mechanism
- upward and downward movement caused by a slow-speed, precision linear actuator
- control of computer-based control box
- 100% repeatability
- quiet, smoothly running mechanism
- easy to operate
- reliable and functional construction made of high quality components
- finish with powder paint in black, white, silver (on request, you can choose another color from RAL palette),
- aesthetic and precise finish.



Dimensions	Max slope angle	Max lifting weight	Unit weight	Rated voltage/frequency
1270x815x190 mm	110°	30 kg	29 kg	230 V/50 Hz