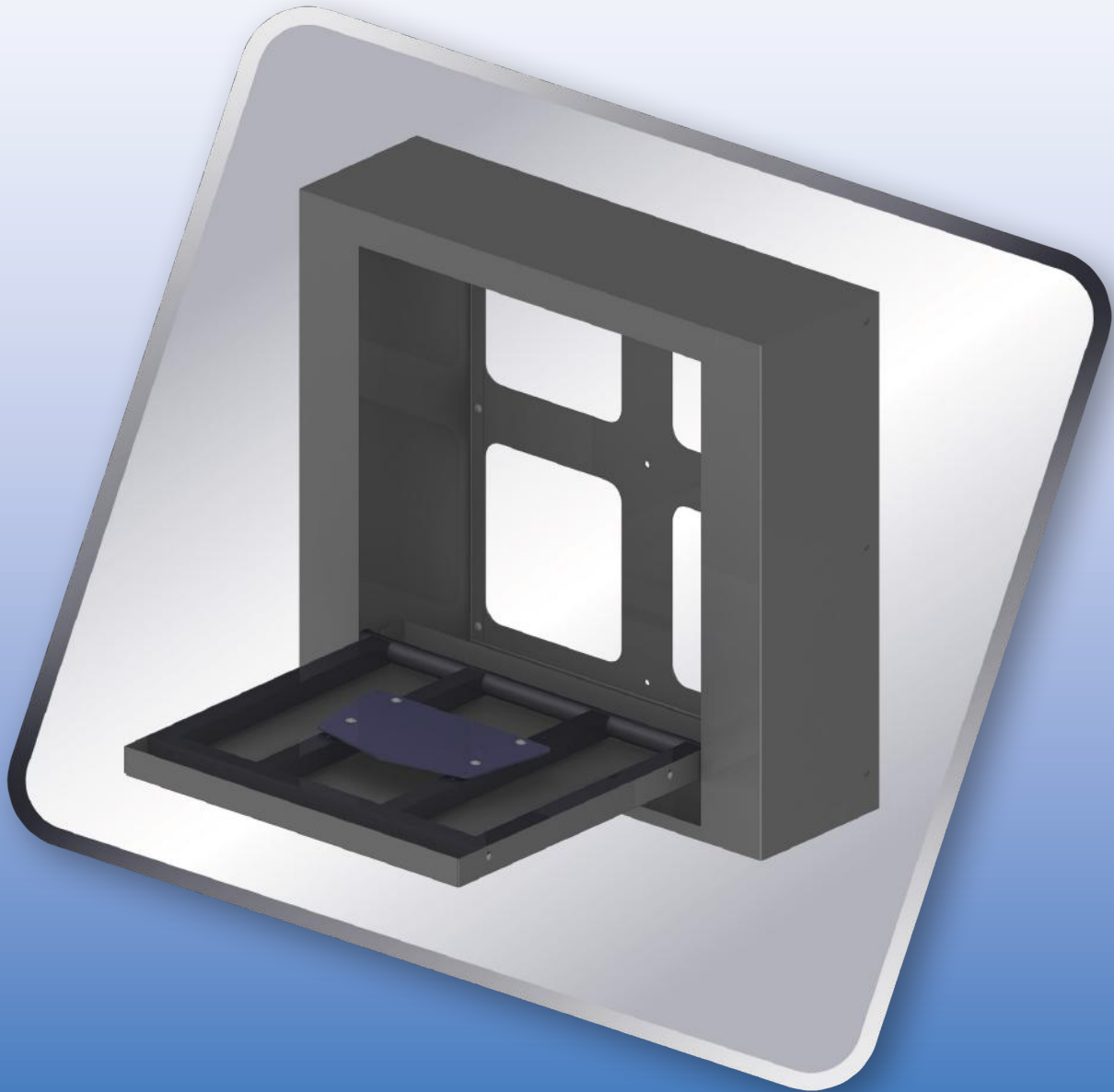


RAVELL®

WALL PROJECTOR LIFT WSP-90



The RAVELL® wall elevator for the multimedia projector is the ideal solution and alternative to the ceiling lifts. Enables you to install a multimedia projector in a wall or in a prepared bay. Allows you to hide the projector for non-use.

The unit is very well used by architects in home arrangements and public utilities.

APPLIANCE:

- Dedicated, in STANDARD version to projector of dimensions 600 x 600 mm
- Max lifting weight: 20 kg (including covering panel)





WALL PROJECTOR LIFT WSP-90

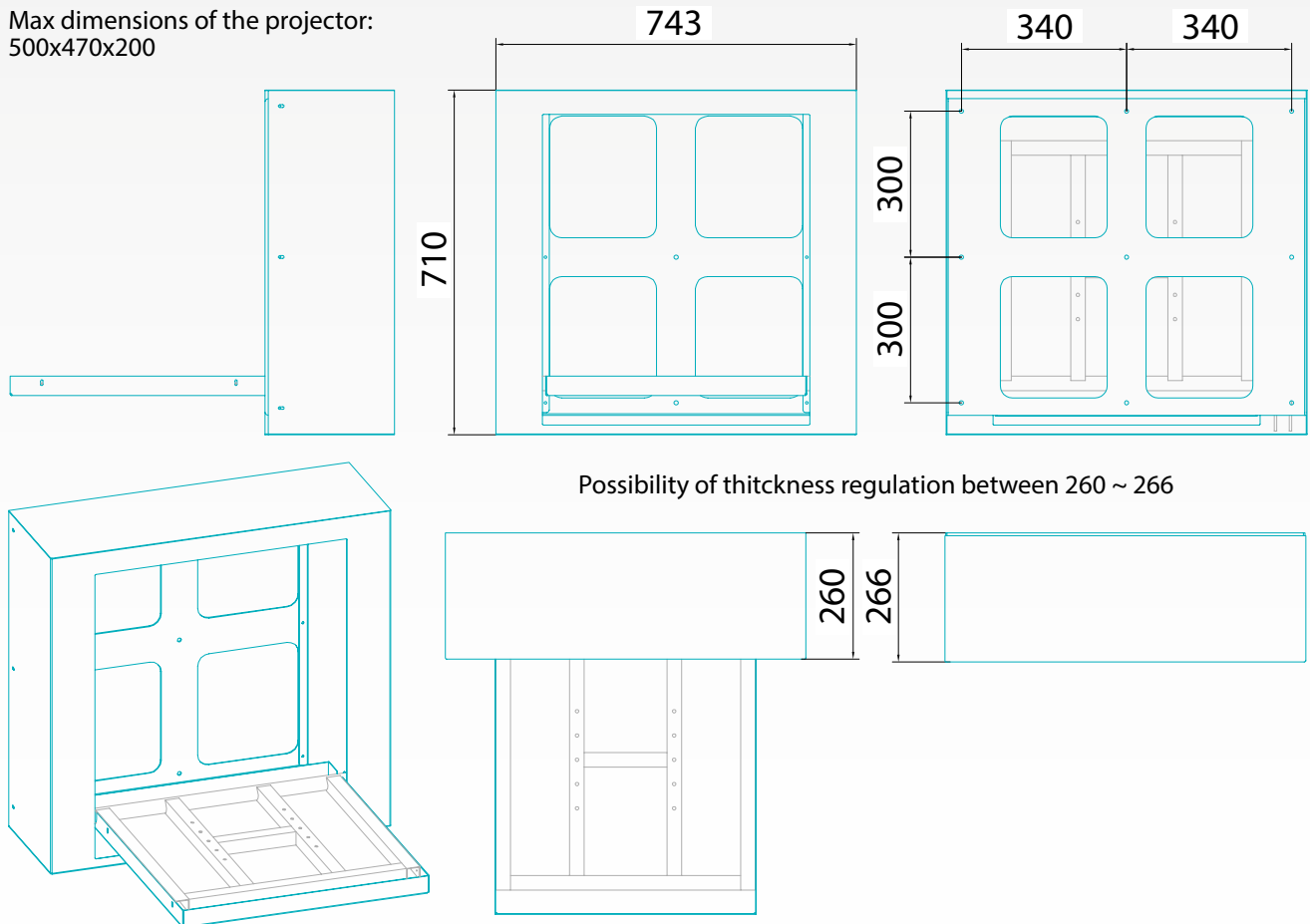
ADDITIONAL ACCESSORIES:

- montage distances to adapt desired measurement,
- remote control (wireless IR, RF or RS232).

MAIN FEATURES:

- lift construction based on a vertical frame system guided by a precision linear acuator,
- upward and downward movement controled by computer-based control box,
- 100% repeatability,
- quiet, smoothly running mechanism,
- easy to operate,
- reliable and functional construction made of high quality components,
- finish with powder paint in black, white, silver (on request, you can choose another color from RAL palette),
- aesthetic and precise finish.

Max dimensions of the projector:
500x470x200



Dimensions	Lid dimensions	Max slope angle	Max lifting weight	Unit weight	Rated voltage/frequency
744x710x266 mm	540x600 mm	90°	30 kg	35 kg	230 V/50 Hz