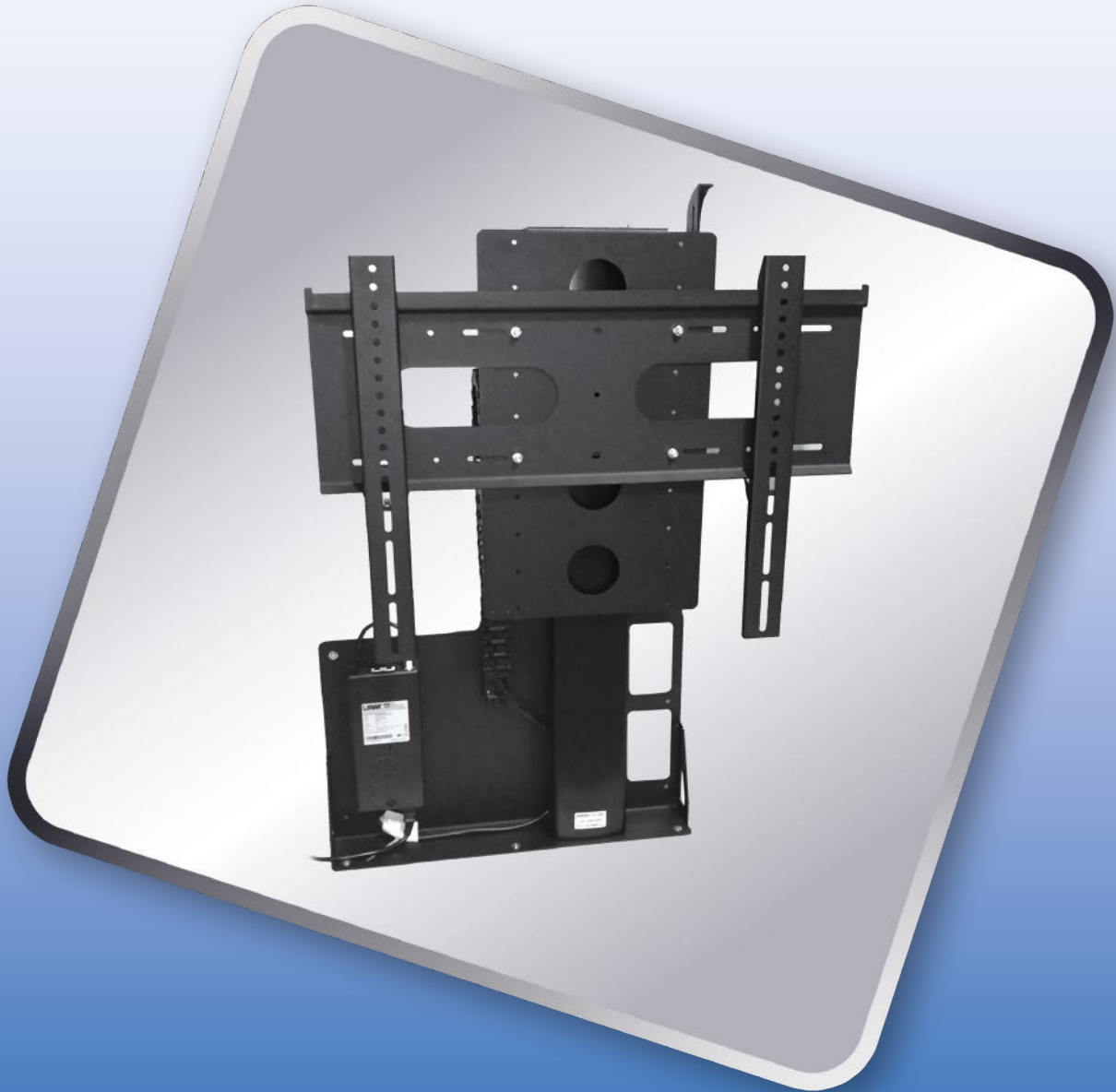


RAVELL®

TV LIFT TV-670



The RAVELL® LIFT TV-670 TV/monitor lifts are mechanisms for ejecting screens out of furniture or cavities for use.

When the TV is not in use, it can be lowered and become invisible.

The furniture lift can operate with TV's or monitors from 22`` up to 43``.

The design of the lift makes it very easy to assemble inside the furniture or cavity.

APPLIANCE:

- LIFT TV-670 for TV/Monitor 22``-43`` diagonal

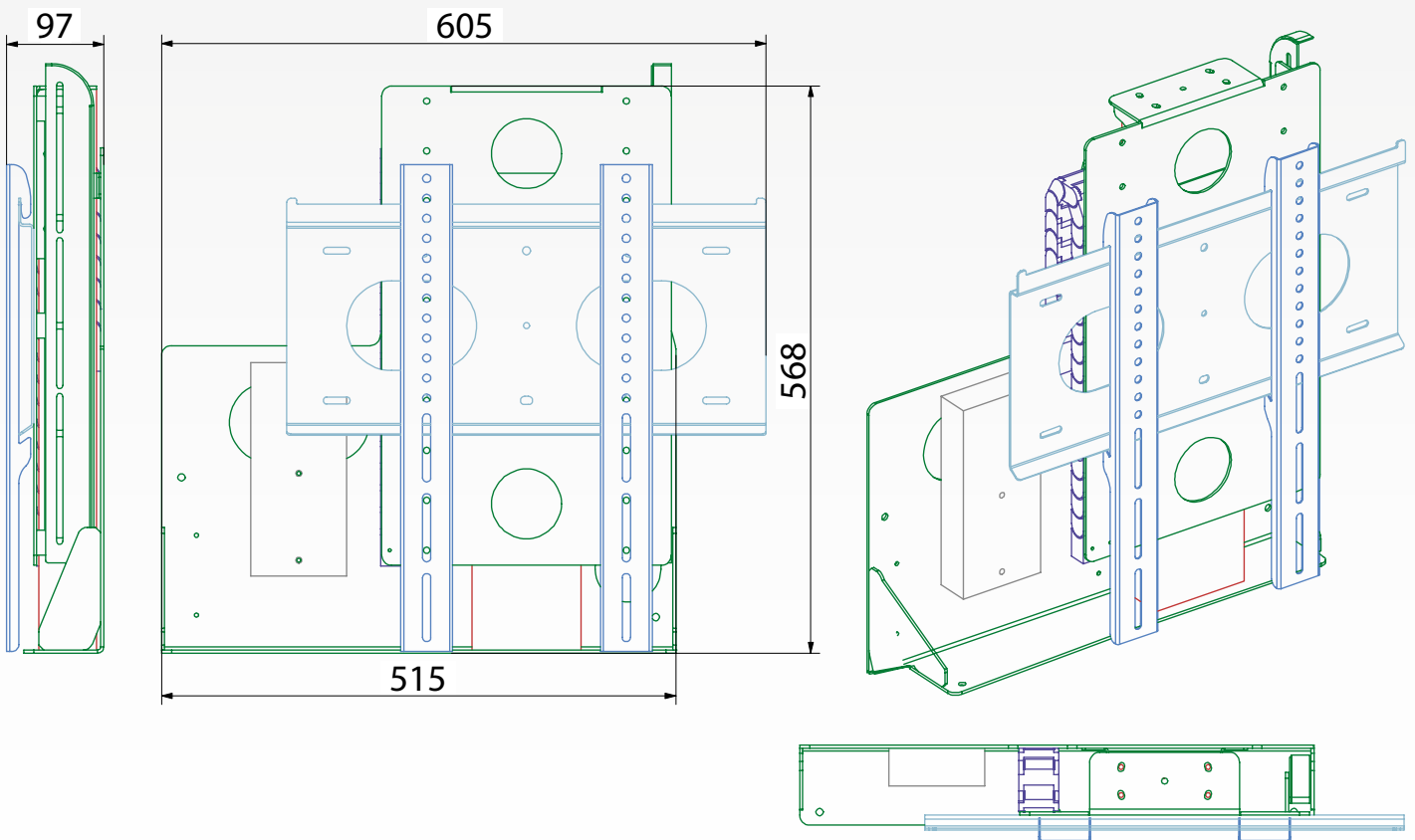


ADDITIONAL ACCESSORIES:

- Remote control (wireless IR, RF or RS232).

MAIN FEATURES:

- mechanism made of highest quality components with every technical novelty,
- silent, Smooth mechanism, based on column line or rope drive,
- many protective mechanisms and sensors,
- equipped with universal TV/monitor mount. VESA standard 600x400 mm,
- on demand: dedicated Tv/monitor mount for a specific models,
- easy control,
- compatibility with almost every known Tv/monitor model,
- aesthetic and precise finish.



Dimensions	Max range	Max lifting weight	Unit weight	Rated voltage/frequency
515x570x97 mm	670 mm	70 kg	17 kg	230 V/50 Hz